

The History of St. Joseph's Health Centre Guelph

1861 - On November 22, 3 Sisters of St. Joseph of Hamilton came to Guelph and opened a 16-bed facility for the sick, the aged, and the infirm. This initiative was the area's first healthcare institution and was located in an old farmhouse purchased for the Sisters. The building was known as the 'Gate House' because it was located near a toll gate.

1862 - A large 2-storey limestone building was erected to increase the number of beds to 40. It was capped by a bell tower from which the Angelus rang out 3 times daily.



Hospital and House of Providence 1861

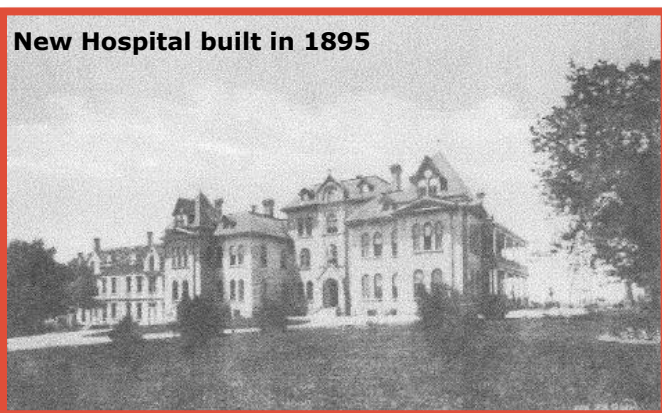
1877 - A \$4,400 addition to the hospital was added. Architecturally, this building matched the existing 1862 building, increasing the bed count to 77.

1887 - The first telephone was installed. Our phone number was 114.

1888 - Due to a diphtheria epidemic, an isolation cottage or 'Pest House' as they were commonly called, was built behind the hospital. While over 100 patients were treated there, only 13 died from the dreaded disease.

1888 - The cost of caring for one person for a day was 49 cents.

1894 - Ground was broken for a new hospital on August 9. The new structure was built on the same site as the old Gate House. Limestone from the old farm house was saved and used to build the foundation for the new building.



New Hospital built in 1895

1895 - A new buff coloured brick building, completed for \$38,027.74, opened in October. The older buildings, built in 1862 and 1877, were renovated and then used as the House of Providence.

1897 - Sister Martina and Sister Leo went to Mercy Hospital, Kalamazoo, Michigan, to train as graduate nurses.

1899 - St. Joseph's opened its own training school for nurses. In 1902, 9 Sisters were the first graduates. In 1904, lay nurses began

enrolling. Six subjects, taught by 6 doctors, were on the curriculum.

1923 - The Sisters announced that they had the proposal of enlarging their institution under consideration. They felt an urgent need for better accommodation for the sick and afflicted in the hospital, and also for the aged and infirm in the House of Providence.

1925 - Two wings were added to the 1895 building at a cost of \$130,000. The 104-bed hospital had private toilets, call buttons, telephone receptacles, and a sunroom facing south at the end of each floor.



New Wings added 1925

1934 - The physiotherapy department opened in May with all the latest equipment.

1936 - The Ladies' Auxiliary, with 60 members, was formally established.

1942 - The cost of caring for one person for one day was \$2.35.

1947 - The cost of caring for one person for one day was \$3.50.

1951 - A 5-storey addition, built on the north-east corner of the existing building facing Westmount Road, opened. The post-war baby boom was evident in a new 3rd floor obstetrical department.

1955 - A tunnel linking the Nursing School with the Hospital was completed.

1956 - The cost of caring for one person for one day was \$14.96.

1957 - An emergency power generator was installed to provide critical areas with electricity in the event of a power failure.

1959 - Residents of the House of Providence moved into a new building, St. Joseph's Home, facing Edinburgh Road. A 2nd wing was set aside for the chronically ill. The spacious new residence included a craft room, barber shop, and library.

1960 - A new volunteer organization for the Home and Chronic Care residents began. St. Joseph's Guild, with over 120 members, purchased bed lights, craft supplies, and physiotherapy equipment that first year.

1967 - Board of Trustees talked of expanding the services of St. Joseph's Hospital and adding a new wing to the building.

1970 - The cost of caring for one person for one day was \$51.15.

1973 - The Extended Care Wing was renamed the Continuing Care Unit.

1974 - After 75 years of operation, the last class graduated from St. Joseph's School of Nursing. Nursing schools in the province then came under the jurisdiction of community colleges.

1976 - The cost of caring for one person for one day was \$136.00.

1984 - A new logo and theme, designed to represent the recent amalgamation of the Hospital and Home, were introduced. The logo featured a stylized tree and cross in an oval.

1991 - The Hospital took on a purely elective role providing the community with a growing Ambulatory Care Department and Day Surgery Program.

1992 - Ontario's Ministry of Health confirmed St. Joseph's future to rebuild as a long term care centre of excellence.

1993 - The Volunteer Association held the first annual Festival of Trees.

1994 - The Staff Cafeteria received a new look and grand re-opening with a new name - The Basement Bistro.

1995 - The Westmount Road lobby and Central Registration gained a bright new appearance.

1996 - St. Joseph's Hospital and Home celebrated 135 years of service to the Guelph and area communities.

1997 - The Edinburgh Road lobby was completely renovated and a new therapeutic garden was opened for the residents to enjoy. The cost of caring for one person for one day was \$530.

2000 - In January, excavation began on a new 254-bed long term care centre.

2001 - St. Joseph's Hospital and Home changed its name to St. Joseph's Health Centre Guelph (SJHCG).

2002 - At the end of October our residents and patients left their old home at 80 Westmount Road and moved next door to their new home at 100 Westmount Road.

2004 - During the summer and fall, the old 1895 building and its various additions were demolished.

2006 - On April 3, the Short term and Long term Rehabilitation Department transferred from the Guelph General Hospital to St. Joseph's Health Centre Guelph, Rosewood Neighbourhood.

2009 - On June 19, the ground breaking ceremony took place for the new 96 bed long term care addition.

2010 - In November, residents began being admitted to the 3rd and 4th floors of the new addition, the Elmwood and Ashley neighbourhood residents moved to the 2nd floor of the North wing while the floor was repaired on Elmwood and Ashley.

On November 22, the ground breaking ceremony took place for the Residences of St. Joseph's ~ consisting of 80 apartment rental units for seniors with low to moderate incomes and seniors with disabilities.

2011 - In February, the Elmwood and Ashley residents moved back to the East wing and admission of new residents to the 2nd floor new North Wing was completed.

On March 19, the Feast of St. Joseph's was celebrated in the new 2nd level auditorium with the newly ordained Bishop Crosby.

On September 7, the 150 year old Silver Maple tree was felled and a new silver maple was planted near the Tranquility Garden.

Tuesday, September 6, 2011 | WATERLOO REGION RECORD | Vitalis, B6

Hospital says goodbye to 150-year-old maple

Tree was planted by a grateful guest at St. Joe's in Guelph in 1861

Record news service

GUELPH - St. Joseph's Health Centre will say goodbye to its longest resident Wednesday: a 150-year-old silver maple.

A silver maple planted on the property when St. Joseph's was founded in 1861 will be taken down.

Sitting in a field just south of the current St. Joseph's near Westmount Road on what used to be the location of the original St. Joseph's hospital, the silver maple looks as though it has seen better days.

St. Joseph's is removing the tree on the advice of an arborist for safety reasons. A large branch and metal cables that were supporting it fell during a nasty storm in June.

Limbs are gone, some lying on the grass at its broad base. Branches have Spartan quantities of leaves. A protective fence has been erected to prevent pedestrians getting close enough to be hit by branches that may come down in the wind.

"We're very sad to see it go," St. Joseph's president Marianne Walker said in a press release. "For a century and a half it's been a landmark and symbol for us. It's been part of St. Joseph's since our story began and will probably live forever in our logo."

"But if it has to be done, it's fitting for us to fell it this year when we're celebrating our 150th birthday."

According to St. Joseph's records, the original tree was planted in 1861 after a pedlar going door to door was shown kindness and a hot meal by the sisters who lived at St. Joe's at the time.

That pedlar planted the silver maple as a show of gratitude. The tree will come down at 2 p. m. Wednesday.

That job may prove to be a challenge.

Years ago cement was poured into holes in the trunk to help stabilize the tree. Nobody really knows how much or where that cement ended up, so a quick chainsaw procedure is unlikely.



A 150-year-old silver maple tree, with St. Joseph's Health Centre in the background, is slated to come down Wednesday.

TOP PHOTO: GUY LAWRENCE/STANDARD

2017 – The organization completed a brand refresh and adopted a new, modern logo with a colourful tree image and embedded cross. The tree is reminiscent of the former brand, representing the silver maple planted on the property by founders, the Sisters of St. Joseph. The tree symbolizes SJHCG’s roots of kindness, compassion, dignity, and respect, and the diversity of colour depicts the celebration of life in all its stages, as well as openness, accessibility, and inclusiveness to all members of the community. “Serving with Compassion, Care and Courage”, the new tagline accompanying the logo, refers to the enduring philosophy and mission of the Sisters of St. Joseph.



To date, the Health Centre has developed expertise in many areas. Our various Programs of Care all exemplify SJHCG’s history of service. SJHCG continues to adapt to the diverse and changing needs of the community and the rapidly changing healthcare environment, garnering our inspiration from the courage and compassion of the Sisters of St. Joseph. As did the Sisters, today’s Health Centre staff consider it ‘a privilege to serve our dear neighbour’.

